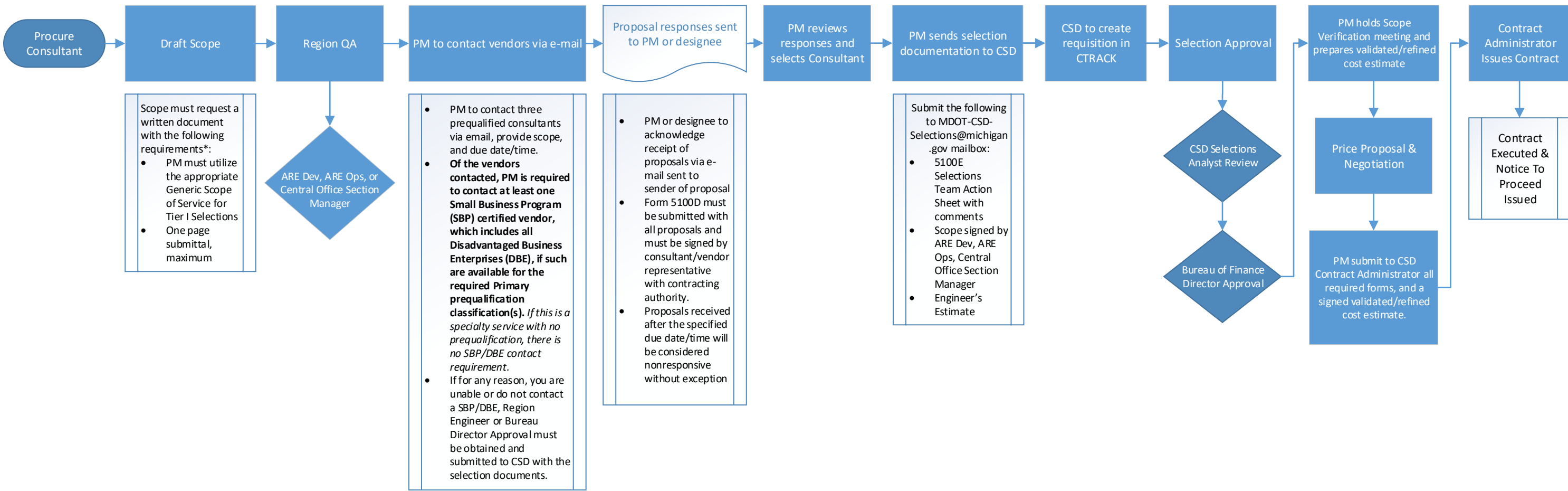


# Tier I Selections – Under \$250,000

## For Qualifications Based Selections Only

(for State or Federally funded project phases)

Updated process effective January 01, 2021



Scope Reviews & Approvals		
<p><b>Region/TSC Managed Design Jobs:</b>  <u>Associate Region Engineer of Development, or designated approver</u></p> <p>Erin Chelotti – University Region                      Gail Deans – North Region                      Jason Garza – Bay Region                      Mark Maloney – Superior Region                      Steve Minton – Metro Region                      Kitty Rothwell – Southwest Region                      Susan Rozema – Grand Region</p>	<p><b>Region/TSC Managed Construction or Operations Jobs:</b>  <u>Associate Region Engineer of Operations, or designated approver</u></p> <p>Steve Palmer – University Region                      Bill Wahl – North Region                      Kim Zimmer – Bay Region                      Jack Bedard – Superior Region                      Ishrat Jahan – Metro Region                      Mark Grazioli - Metro Region                      Janine Cooper – Southwest Region                      Tom Tellier – Grand Region</p>	<p><b>Non-Region/TSC Managed Jobs:</b>  <u>Appropriate Section Manager or designated approver – as applicable</u></p>

Tier I Selections - Contracting Process Assumptions
<ul style="list-style-type: none"> <li>No scope review by Contract Services Division Scope Engineer</li> <li>Use of latest approved Contract Services Division Generic Scope Templates and other contracting documents</li> <li>Process will only apply to Standard Contracts</li> </ul>

\*Scopes must identify both primary and secondary prequalification classifications requirements, as determined for each project. The prime consultant must be prequalified in all primary prequalification classifications identified in the scope. They may however, subcontract work identified under the primary prequalification classification(s). The prime consultant is not required to be prequalified in the secondary prequalification classification(s) identified in the Scope of Work. All work, however, must be performed by a prequalified consultant, which may be either the prime consultant or a subconsultant. **In all cases, the prime consultant must perform at least 40% of the services, by contract value.**